



GENERAL TOURNAMENT INFORMATION

STRUCTURE OF TOURNAMENTS

EARLY BIRD DRAWING

Each tournament has an Early Bird Drawing. The winner of the drawing gets a free entry to the following year's tournament. To be eligible your paid entry (base entry only) must be received by the Early Bird Deadline. The earlier you enter the more chances you have to win, as for each month prior to the deadline that you enter, you will receive an additional chip in the drawing. For example, if you enter 6 months prior you will receive 6 chips in the drawing. The free entry is good for the following year only and is non-transferable.

ENTRY & PAYMENT DEADLINES

EAST CAPE OFFSHORE

Early Bird Drawing Deadline - June 1st.

Last day to withdraw and receive full refund – June 1st.

Check Payments to U.S. - Last Friday prior to registration day.

Last Day to Enter - Registration Day by cashier's check, credit card or cash.

LOS CABOS OFFSHORE

Early Bird Drawing Deadline - August 1st.

Last day to withdraw and receive full refund – August 1st.

Check Payments to U.S. - Last Friday prior to registration day.

Last Day to Enter - Registration Day by cashier's check, credit card or cash.

BLACK & BLUE

Early Bird Drawing Deadline - August 1st.

Last day to withdraw and receive full refund – August 1st.

Check Payments to U.S. - Two Fridays prior to registration day.

Last Day to Enter - Registration Day by cashier's check, credit card or cash.

ENTRY PROCEDURE OUTLINE

1. Teams may register and enter the tournaments on-line at www.Bisbees.com. Entry forms in PDF format may be downloaded from there as well so teams can enter by mailing or by emailing a completed entry application to the address and/or email address on the form.
2. To be entered, the Base Entry Fee amount must accompany the entry form.
3. To be eligible for the Early Bird Drawing the base entry must be received by the deadline date.

4. When making additional payment(s) – your boat/team name and/or entry number must accompany any form of payment. You can enter additional Jackpots at any time up to the close of registration.
5. We will email the Team Contact confirmation receipts and/or team number for all entries and payments received.

METHODS OF PAYMENT

We strongly advise you pay entry fees before you arrive in Mexico. Fees may be paid in U.S. Dollars by personal, business or cashier's checks, credit cards or wire transfers. If your bank is outside of the U.S. please wire funds instead of sending a check.

Cashier's checks drawn on a US bank, cash and/or credit cards are the only form of payment accepted in Mexico unless previous arrangements have been made. Make checks payable to Black & Blue Tournaments. Email tricia@bisbees.com for wire transfer details.

WITHDRAWAL FROM THE TOURNAMENT

All withdrawals must be submitted in writing. If the withdrawal is received prior to the tournament's Early Bird Deadline a full refund is made. Between the Early Bird Deadline and the cut-off date for check payments, the portion of base entry fee allocated for cash awards is refunded, while 100% of paid optional entry fees are refunded. Once tournament fishing starts there are no refunds for any reason whatsoever.

TEAM CONTACT

Please carefully read the following and choose your Team Contact accordingly.

The Team Contact is the designated team leader; there can be only one Team Contact per team. The Team Contact must know how to reach each member of the team, and the contact information for the Team Contact must be complete and include a cell or local MX phone number and email address. Instructions and confirmations are sent to this person. In addition, the Team Contact is the person to whom any refunds are made payable.

ANGLERS, CAPTAINS AND DECKHANDS

There is no limit to the number of members per team, but you must sign up all team members during Registration. Anybody listed on the entry form is considered an angler including the Captain and any Deckhands. You must provide a First Name, Last Name, City and State for all team members. Team changes



GENERAL TOURNAMENT INFORMATION

must be made in writing and turned in at the Weigh Station or Tournament Headquarters. Team changes are not accepted over the tournament radio unless a special exception is made by the Tournament Organizers. Team members may not change teams during the tournament.

PRIZE DISBURSEMENT

Trophies: Trophies are handed out on stage during the Awards Celebrations. If you would like to purchase additional trophies email info@bisbees.com.

Prize Disbursement Order: Before winnings are paid, each team receiving an award must complete a Prize Disbursement Order specifying how the funds are to be distributed. This form must be signed by each of the team's registered anglers as recorded on the Entry Form. Decisions pertaining to the distribution of a team's total purse are the sole responsibility of the team members, regardless of whether an award is published as an individual or team award.

Payment of Awards

All cash awards are paid from a Mexican bank account in US Dollars by either a MX check or a wire transfer to the team's designated recipient. The tournament will pay for the first wire transfer fee, but if for some pre-approved reason, a second a wire transfer for a team is requested, the tournament will deduct the additional wire transfer fee(s) from the winnings.

Mexican Taxes

We are required by Mexican law to withhold city, state and federal taxes from tournament winnings. The amount can change from year to year, but is currently 15%.

PERMITS & LICENSES

It is the responsibility of registered boat captains and anglers to comply with all Mexican Federal and State laws regarding fishing licenses, size limits, bag limits and any other regulations that may apply. This is a requirement of Mexico and is not a tournament rule—permit and licensing infractions have no bearing on tournament results or awards. A representative from the Mexico Department of Fisheries is normally on-site during Registration at all events to sell Licenses and Permits, but this is not guaranteed. Consult the FONMAR website for more information (www.sportfishingbcs.gob.mx).

ENTRY LEVELS, FEES & AWARDS (USD)

EAST CAPE OFFSHORE and LOS CABOS OFFSHORE Tournaments

Table listing entry levels and prizes for East Cape and Los Cabos Offshore Tournaments, including Tournament Base Entry, Release Division, and various Daily Jackpots.

BLACK & BLUE

Table listing entry levels and prizes for Black & Blue, including Tournament Base Entry, Release Division, and various Daily Jackpots.

ADDITIONAL OPTION: \$20,000 Daily "Krazy Kids' Challenge": \$60,000 (100% return)

BASE ENTRY FEE "OVERALL" TOURNAMENT AWARDS STRUCTURE

By paying the mandatory Base Entry Fees, teams receive angler merchandise and access to the Awards Celebration for four team members. Additional merchandise and access passes may be purchased at the event.

EAST CAPE & LOS CABOS OFFSHORE

"Overall Tournament Awards" are derived from the \$1,500. Base Entry Fee. Of the seventy percent allocated to awards, sixty percent (60%) goes to Billfish Awards, twenty percent (20%) goes to Top Tuna and twenty percent (20%) goes to Top Dorado.



GENERAL TOURNAMENT INFORMATION

Top Overall Tournament Teams — Billfish

Cash prizes are awarded to the top three teams based on the single heaviest qualifying black or blue marlin as follows: Three winners 65.0%/22.5%/12.5%; Two winners 71.25%/28.75%; One winner takes all. If there are no qualifying marlin weighed, the prize money rolls equally to the Gamefish category and is awarded to the top tuna and/or dorado teams.

Top Overall Tournament Teams — Gamefish (Tuna & Dorado)

Cash prizes in these categories are awarded to the top teams based on the single heaviest qualifying tuna and dorado. If there is no winner in one of the Gamefish categories, the prize money rolls to the other Gamefish species category. If there are no qualifying tuna or dorado weighed, the prize money in these categories rolls to the Billfish category and is awarded to the top billfish teams per the published billfish awards percentage breakdowns.

BISBEE'S BLACK & BLUE

The Tournament Base Entry Fee is \$5,000 per team. Of the fifty percent allocated to awards, forty percent (40%) goes to the "Overall Tournament Team Awards" and sixty percent (60%) goes to the "Overall Tournament Jackpot Winners" and "Overall Top Captains".

Overall Top Tournament Teams
Cash prizes are awarded to the top five teams that accumulate the most billfish weight points.

OVERALL TOURNAMENT TEAMS
DISTRIBUTION BASED ON NUMBER OF WINNERS

	5	4	3	2	1
1st	50.00%	51.50%	55.00%	65.00%	100.00%
2nd	20.00%	21.50%	25.00%	35.00%	
3rd	15.00%	16.50%	20.00%		
4th	9.00%	10.50%			
5th	6.00%				

Of the amount allocated to the Overall Tournament Jackpot and Overall Top

Captains, ninety percent (90%) goes to the Tournament Jackpot and ten percent (10%) goes to Top Captains.

Overall Tournament Jackpot
Cash prizes are awarded to the top three Overall Jackpot teams based on the single heaviest qualifying black or blue marlin as follows: Three winners 65.0% / 22.5% / 12.5%; Two winners 71.25% / 28.75%; One winner takes all.

Overall Top Captains
Cash prizes are awarded to the top three Captains who accumulate the most billfish weight points as follows: Three winners 65.0% / 22.5% / 12.5%; Two winners 71.25% / 28.75%; One winner takes all.

HOW DO THE DAILY JACKPOTS WORK?

The Daily Jackpots are optional and return eighty five percent to awards. If you decide to enter a particular Daily Jackpot level, you must enter it for all fishing days of the tournament. For example, in the Black & Blue with three days of fishing the \$500 Daily Jackpot would cost \$1,500. The jackpot fees are per team. You can enter none, one, all or any combination of these jackpots.

BILLFISH DAILY JACKPOTS

The prize money allocated to each Daily Jackpot level is first split evenly between the days of competition, and then each day, one hundred percent of that day's amount is awarded to the team that catches the heaviest qualifying black or blue marlin of the day who is also entered in the Daily Jackpot level. If there is no winner on a particular day, the prize money for that day rolls to the following day, unless it is the last day of the tournament in which case it rolls backwards to the largest fish caught in the category. EXAMPLE: Team A is entered in the \$500 Daily Jackpot only. Team B is entered in the Daily Jackpots across the board. Team A catches the

heaviest fish of the day; Team B catches the second heaviest fish of the day. Team A would win all of the cash for that day in the \$500 Daily Jackpot only. Team B would win all of the cash for that day in the \$1,000, \$2,000, etc. Daily Jackpots.

GAMEFISH DAILY JACKPOTS - (TUNA & DORADO)

The amount allocated to the Gamefish Daily Jackpot is first split evenly between the two species, then split evenly between the days of competition. Of the amount allocated to cash awards for any particular day, one hundred percent is awarded to the teams that catch the heaviest qualifying tuna and dorado that are also entered in the Daily Gamefish Jackpot. If there is no winner on a particular day the prize money for that day rolls to the following day, unless it is the last day of the tournament in which case it rolls backwards to the largest fish caught in the category. If there are no qualifying fish caught of a particular species throughout the entire tournament, the money for that species rolls to the other species on a day by day basis. EXAMPLE: If a qualifying dorado is caught every day, but no qualifying tuna are caught at all, the day one tuna jackpot money rolls to the day one dorado, the day two tuna jackpot money rolls to the day two dorado.

Optional RELEASE CATEGORY (all Tournaments) – Billfish

Cash prizes are awarded to the top three overall teams based on the most accumulated team points as follows: Three winners 65.0%/22.5%/12.5%; Two winners 71.25%/28.75%; One winner takes all.

Top Release Teams

Cash prizes are awarded to the top three teams that accumulate the most billfish release points as follows: Three winners 65.0% / 22.5% / 12.5%; Two winners 71.25% / 28.75%; One winner takes all.



GENERAL TOURNAMENT RULES

Except where noted, the following information and rules apply to all three events.

1. Rules, including published rules in print or on the Bisbee's website (www.bisbees.com), are subject to change without notice. Additional instructions are given at the Captains'/Anglers' Meeting for each event, where attendance by at least one team member is mandatory. It is the sole responsibility of the participating anglers, captains, crews and guests ("Participants") to know and abide by the Tournament Rules. By entering one of the Bisbee's Tournaments and paying the entry fee, Participants agree to abide by the Tournament Rules and accept the decisions made by the Tournament Organizers as final.

2. Nature of Tournament

The Bisbee's Tournaments are fishing competitions. Participants enter at their own risk, and understand the possibility exists that there may be no winners if no qualifying fish are caught.

3. Tournament Start

The official start of each fishing day is a "Shotgun Start" where boats line up and wait for the firing of the start flare. Boats must be behind the start line 15 minutes prior to the Shotgun Start. Any boat not clearly behind the start line at this time is disqualified from the day's fishing. Boats disqualified for this violation a second time are disqualified from the entire event, and the team forfeits any and all entry money, prizes or prize money. The start line is defined at the Captains'/Anglers' Meeting and/or over the tournament's VHF radio channel on each fishing morning.

4. Bait Fishing Prior to Tournament Start

Teams may attempt to catch or purchase bait until 15 minutes prior to the official start time. At this time, all fishing lines and teasers must be removed from the water and nothing may be transferred between boats.

5. Hand-Offs Between Vessels

From 15 minutes prior to the start of fishing to the end of the tournament's fishing hours, no vessel entered in the tournament may be involved in the handing off or receiving of anything from another vessel whether that vessel is entered in the tournament or not, or any other entity of any sort including bait receivers. The Tournament Organizers may choose to grant special permission in advance to waive this rule if someone's personal safety or health is at risk.

6. Fishing Times

East Cape Offshore: 7:00am–4:00pm
Los Cabos Offshore and Black & Blue: 8:00am–5:00pm

7. A fish hooked prior to end of fishing may be fought until boated, released or lost provided the team arrives at the weigh station prior to its closing for the day if they have a fish to weigh or release to report.

8. Weigh Station Hours

East Cape Offshore: 12:00pm–7:00pm
Los Cabos Offshore and Black & Blue: 2:00pm–9:00pm

9. Extended or Shortened Fishing Hours

The Tournament Organizers reserve the privilege of changing the starting and ending of fishing times to coincide with weather, tides, and improved probability of better fishing conditions. Fishing hours will not be changed during the tournament unless all teams are included,

and no qualifying fish have been caught and/or released.

10. Weather and "Complete Tournament"

Should any government officials beyond the control of the Tournament Organizers cancel any scheduled tournament fishing day(s) because, in their judgment, unsafe conditions exist at sea, resumption of fishing will be announced by 6:00am the following morning on the tournament's VHF radio channel and be posted on the tournament's web-site. A resumption of fishing announcement by the Tournament Organizers does not ensure the safety of any participant. Whether or not to fish must be based solely on the team's own judgment taking into consideration the prevailing conditions, the seaworthiness of their vessel, and the crew's seamanship skills. All attempts will be made to fish as many days as possible, but as little as one day of fishing or any part thereof constitutes a complete tournament.

11. Cancelled Fishing Days

Should any fishing day(s) be cancelled, the other scheduled fishing days that are fished per the original schedule will constitute a tournament. No additional fishing days will be added to a tournament due to the cancellation of any fishing day(s).

12. Cancellation of Entire Tournament

If for reasons beyond the control of the Tournament Organizers, a tournament must be canceled prior to any portion of the scheduled fishing days, the portion of Entry Fees and Optional Jackpot monies that were allocated for cash awards will be refunded by check within four weeks to the Team Contact—one check per team. Teams may choose to roll their





TOURNAMENT RULES

refund amount to any of the following year's events.

13. No Qualifying Fish Caught — Refunds

In the event no qualifying fish are caught during the tournament the portion of the optional Daily Jackpot monies that were allocated for cash awards are refunded by check within four weeks to the Team Contact—one check per team. There is no refund of Base Entry Fees. Teams may choose to roll their refund amount to any of the following year's events.

14. Boundaries and Grid Maps

Teams must fish within the boundaries laid out by the Tournament's Grid Charts. East Cape Offshore: 50 mile radius from host resort.

Black & Blue and Los Cabos Offshore: 40 mile radius from Cabo San Lucas.

15. Communications and Tournament Standings

The VHF radio channels, backup channels and telephone numbers used to contact Radio Control and Tournament Officials are provided during the Captains'/Anglers' Meeting and on the tournament's VHF radio channel prior to the start of fishing. Tournament standings are broadcast every morning over the radio, and fish weights are announced as fish are weighed.

16. Reporting Catch to Radio Control and Official Time

When a fish is hooked, captains must report to Radio Control the Boat Name, Angler Name, Grid Area and Species. The boat captain must again report to Radio Control when the fish is lost, released or boated. In addition, fish still being fought at lines out must be reported to Radio Control as soon as possible. Times are recorded to the whole minute. The time

recorded by Radio Control is the official time. Due to radio traffic congestion during the last minutes of a fishing day, in any instance where Radio Control did not have a hook up recorded prior to lines out, and the team is reporting a fish as being as so, the Tournament Organizers will determine the fish's qualification on a per instance basis.

17. Any team intentionally reporting wrongful information to Radio Control for the purpose of altering tournament standings or results is disqualified from the event, and forfeits any and all entry money, prizes or prize money.

Eligible Species & Points (see chart on opposite page)

18. Penalty Points and Disqualification

Black or blue marlin weighing less than 300 lbs. are not eligible for cash awards. Black or blue marlin weighing less than 300 lbs. are awarded zero points and also penalized 25 points plus two points for every pound under 300. EXAMPLE: A 290 lb. blue marlin would be awarded 0 points and be penalized 25 points plus 20 points (2pts. x 10lbs.), making the total points for the fish -45. The negative points are deducted from the team's overall awards weight/points. East Cape and Los Cabos Offshore Tournaments: Tuna weighing less than 40 lbs. and Dorado weighing less than 30 lbs. are simply disqualified.

19. Official Billfish Release

A billfish is considered officially released when the leader connection is wound to the tip of the rod, or the mate or other crew member touches the leader.

20. Billfish Scorecards

Scorecards for all fishing days will be given to teams entered in the Release

Category at registration. Scorecards are compared to radio logs for verification. Scorecards must be signed by the Boat Captain indicating they agree to the information as recorded. All billfish released or boated must be recorded on the Billfish Scorecard (you do not need to record gamefish on the scorecard). Scorecards must be turned in at the Weigh Station or a photo of it emailed to Release@Bisbees.com on the same day the fish were caught prior to the day's Weigh Station Closing Time. If you did not catch a billfish you do not have to turn in a scorecard.

21. Any team intentionally recording wrongful information on the scorecards for the purpose of altering tournament standings or results is disqualified from the event, and forfeits any and all entry money, prizes or prize money.

22. Billfish Release Photo Verification

Teams must verify their catch by taking digital photos of billfish as they are released. Collectively, the PHOTOS MUST SHOW TWO THINGS, the mate's hand on the leader and/or the leader connection touching the rod's tip, AND identify the billfish species. If it can be determined that it is a billfish, but not necessarily a black or blue marlin, 100 points will be credited for a striped marlin, sailfish or spearfish. If it cannot be positively identified as a billfish, no points will be awarded. Teams must provide their own digital cameras and make sure the date and time on the camera is correct.

The procedure is:

A) Radio Control will announce the Verification Object to take a picture of at the beginning of each fishing day. This picture of the object must be taken before any billfish photos are taken for the day.



TOURNAMENT RULES

SPECIES	PTS / POUND	PTS / RELEASE	MINIMUM	LIMIT TO WEIGH
---------	-------------	---------------	---------	----------------

BLACK & BLUE MARLIN TOURNAMENT

Blue Marlin	1 (one)	300	300 lbs	1 / angler / day and 2 / boat / day
Black Marlin	1 (one)	300	300 lbs	1 / angler / day and 2 / boat / day
Striped Marlin	n / a	0	release only	n / a
Sailfish	n / a	0	release only	n / a
Spearfish	n / a	0	release only	n / a

EAST CAPE AND LOS CABOS OFFSHORE

Blue Marlin	1 (one)	300	300 lbs	1 / angler / day and 2 / boat / day
Black Marlin	1 (one)	300	300 lbs	1 / angler / day and 2 / boat / day
Striped Marlin	n / a	100	release only	n / a
Sailfish	n / a	100	release only	n / a
Spearfish	n / a	100	release only	n / a
Dorado	1 (one)	n / a	30 lbs	1 / team / day
Tuna	1 (one)	n / a	40 lbs	1 / team / day

B) A "separator" photo must be taken in between each billfish. All you need to do is a finger count. For example, after releasing your first fish hold up 1 finger. After releasing your second fish hold up 2 fingers etc.

C) Images must be handed in at the Weigh Station or designated area each day, where the digital media will be downloaded onto the tournament's computer, or you may email the photos to Release@Bisbees.com each day. If emailing, be sure to include whatever text you think necessary to help judges verify the fish including team name/ number and date.

D) Release photos are reviewed at Tournament Headquarters. Judging does not take place at the weigh station.

E) Any release photos posted on the website are for entertainment purposes only, and not all release photos are posted.

23. Weigh-In Procedures

Upon the weigh station opening each fishing day, fish will be weighed in the order of boat arrival to the weigh station unloading dock. Should more than one boat be at the weigh station prior to opening, the fish will be weighed in the

order of arrival. All fish must be weighed at the tournament's official weigh station. Weigh station officials will continue to weigh fish for all boats that arrive prior to the following deadlines:

- East Cape Offshore: Must be in front of the weigh station by 7:00pm on both days.
- Los Cabos Offshore: Must be inside of the harbor jetties by 9:00pm on both days*.
- Black & Blue: Must be inside of the harbor jetties by 9:00pm all three days*.

* As verified by a Tournament Observer at the jetties.

24. ANY marlin brought onboard a boat must be weighed. A fish is considered "onboard" when more than 50% of the fish is inside the boat.

25. Weighed fish become the property of the tournament.

26. Fish must be brought to the scales on the boat on which they were caught.

27. Fish to be weighed must be presented to the weigh station on the same day they are caught.

28. The angler must remain with the fish throughout the weigh-in.

29. Before leaving the scales, the angler must verify weight information, sign the Weigh-In Form and provide a telephone number where they can be reached.

30. The rod, reel, line, leader, lure and hook(s) must accompany each fish to be weighed and presented to the Weighmaster.

31. Any fish brought to the weigh station may have its mouth sealed closed. However, once the Weighmaster has raised the fish on the scale the angler will be asked to remove whatever is sealing the mouth closed and clip any external leader material to the outer edge of the fish's mouth. Except for artificial lures, nothing will be pulled from inside the fish. Whatever may fall from the fish due to gravity remains out when determining the fish's weight.

32. A team intentionally mutilating a fish for the purpose of altering tournament standings or results is disqualified from the event and forfeits any and all entry





TOURNAMENT RULES

money, prizes or prize money.

33. Breaking Ties

Ties between two or more fish that weigh the same are broken by the time the fish were weighed. Point ties in the Release Categories are broken by the official time that the final releases were made to obtain the final amount of points. In other words, the first team to reach the amount of final points is the winner. Times are recorded to the whole minute.

34. Polygraph Examination

One person from each team that is receiving a cash award must complete a polygraph examination. This person must have been directly involved with either the release or the capture of the fish (angler, captain or wireman). The final selection of the person to receive the examination is made by Tournament Officials. Failure to comply, or failing the examination, results in a disqualification of the entire team and the team forfeits any and all entry money, prizes or prize money.

35. Release of All Claims

(This section should be carefully read by each Participant).

In consideration for being accepted by the Tournament Organizers for participation in Bisbee's Black & Blue Marlin Tournament, Bisbee's East Cape Offshore Tournament or Bisbee's Los Cabos Offshore Tournament ("the Tournaments"), the Participants hereby release, forever discharge, and agree to hold harmless the Tournaments, Tournament Promotions, Inc., Torneos De Pesca S.A. de C.V. and their respective officers, directors, employees, agents, volunteers, partners, members, and/or attorneys (collectively the "Releasees") for any and all losses, claims, or demands of any kind whatsoever arising from the

negligence of the Releasees or from any other cause connected with, or occurring during the Tournament. The Participants expressly acknowledge that he/she has received, reviewed, and agrees to abide by the Tournament Rules and this Release. Furthermore, the Participants expressly acknowledge that activities relating to deep sea fishing are extremely dangerous and involve the risk of serious injury or death. Having so acknowledged, the Participants hereby assume full responsibility for the risk of bodily injury or death due to the negligence or gross negligence of the Releasees or any other cause connected with or occurring during the Tournament.

36. Disputes/Protests

All disputes, protests, claims, differences or controversies relating to any aspect of the Tournament, including, without limitation, Tournament Rules, must be submitted in writing to the Tournament Organizers no later than twelve (12) hours following the official closing of the Tournament Weigh Station on the day the supposed infraction occurred. All such disputes shall be ruled on by the

Tournament Organizers and shall be final and binding upon all parties.

37. Participation

The Participants specifically agree that any photograph, motion picture, or audio recording in which they appear or are heard in may be used by Tournament Promotions, Inc. for any purpose whatsoever including, but not limited to, resale, advertising, and promotional material without compensation or restriction of any kind.

ANGLING RULES

The Bisbee's tournaments are "Team" tournaments

1. The tournament does not regulate who may be involved in the management of, or the manipulation of, the equipment and/or tackle leading up to, during, or following the playing of a fish. This means that more than one angler may fight a single fish.

2. Once a fish is hooked, the rod/reel involved in playing the fish must stay in physical contact with the angler(s).

3. When a fish is hooked or entangled on more than one line, the team must cut away the extra line(s) as quickly as possible.

4. From the time that a fish strikes, anyone onboard may remove other lines, teasers and devices from the water.

5. Once the leader is brought within grasp of the crew, or the end of the leader is wound to the rod tip, more than one person is permitted to touch the leader—this DOES NOT apply to the double line.

6. One or more gaffers may be used in addition to persons holding the leader. The gaff handle must be in hand when the fish is gaffed.

THE FOLLOWING ACTS WILL DISQUALIFY A CATCH

1. Failure to comply with the Tournament's general, equipment or angling rules and regulations.

2. Resting the rod in a rod holder, on the gunwale of the boat, or any other object while playing the fish.



ANGLING RULES

3. Handlining or using a handline or rope attached in any manner to the angler's line or leader for the purpose of holding or lifting fish.
4. Shooting, harpooning, or lancing any fish at any stage of the catch.
5. Chumming with or using as bait the flesh, blood, skin, or any part of mammals other than hair or pork rind used in lures designed for trolling or casting.
6. Using a boat or device to beach or drive a fish into shallow water in order to deprive the fish of its normal ability to swim.
7. Changing the rod or reel while the fish is being played.
8. Splicing, removing, or adding to the line while the fish is being played.
9. Using a size or kind of bait that is illegal to possess.
10. Attaching the angler's line or leader to part of a boat or other object for the purpose of holding or lifting fish.
11. If a fish escapes before gaffing and is recaptured by any method other than as outlined in the angling rules.
12. When a rod breaks (while the fish is being played) in a manner that reduces the length of the tip below minimum dimensions.
13. Mutilation to the fish, prior to boating the catch, caused by sharks, other fish, mammals, or propellers that remove or penetrate the flesh. Injuries caused by leader or line, scratches, old healed scars or regeneration deformities are not considered disqualifying injuries.

EQUIPMENT RULES

Two pages of diagrams follow to help clarify these rules. Anglers are responsible for their own bait. Any lures, teasers or bait may be used as approved by these rules and the Illustrated Diagrams that follow.

1. FISHING LINE & BACKING

New (updated 9/2017)

a) The term "Backing" pertains to any line on the reel that precedes the "Fishing Line" whether connected to the fishing line or not. The use of backing is permissible and does not have a maximum strength limit.

The term "Fishing Line" pertains to the first 16.5 feet (5 meters) of line directly preceding the double line, leader, or hook. This section of fishing line must be comprised of a single, homogenous piece of line, and have a "Manufacturer's Stated" maximum breaking strength of 130 lbs. or less. The catch shall be classified under the breaking strength of the Fishing Line and must be a minimum length of the stated 16.5 feet (5 meters).

Dacron, monofilament, multifilament, and lead core multifilament lines may be used on either. Line by the trade name of Spectra is acceptable. Wire lines are prohibited.

2. Double Line

The use of a double line is not required. If one is used, it must meet the following specifications:

- a) A double line must consist of the actual Fishing Line used to catch the fish.
- b) Double lines are measured from the start of the knot, braid, roll or splice making the double line to the farthest end of the knot, splice, snap, swivel or other device used for securing the trace, leader, lure or hook to the double line.
- c) The double line on all classes of tackle shall be limited to 30 feet. The maximum combined length of the double line and leader is 40 feet.

3. Leader

The use of a leader is not required. If one is used, it must meet the following specifications:

- a) The length of the leader is the overall length including any lure, hook arrangement or other device and is measured to the bend of the last hook.
- b) The leader must be connected to the line with a snap, knot, splice, swivel or other device.
- c) There are no regulations regarding the material or strength of the leader.
- d) The leader on all classes of tackle shall be limited to 30 feet. The combined length of the double line and leader shall be limited to 40 feet.

4. Rod

- a) Rods must comply with sporting ethics and customs.
- b) The rod tip must be a minimum of 40 inches in length. The rod butt cannot exceed 27 inches.
- c) These measurements must be made from a point directly beneath the center of the reel. A curved butt is measured in a straight line.





EQUIPMENT RULES

5. Reel

- a) Reels must comply with sporting ethics and customs.
- b) Power driven reels of any kind are prohibited. This includes motor, hydraulic, or electrically driven reels, and any device which gives the angler an unfair advantage.
- c) Ratchet handle reels are prohibited.
- d) Reels designed to be cranked with both hands at the same time are prohibited.

6. Hooks — Natural Bait (Live or Dead)

- a) Any hook used with natural baits, live or dead, must be a non-offset circle hook.
- b) No more than two single hooks may be used. Both must be firmly imbedded in or securely attached to the bait. The eyes of the hooks must be no less than a hook's length (the length of the largest hook used) apart and no more than 18 inches apart. The only exception is that the point of one hook may be passed through the eye of the other hook.
- c) A hook may not precede the bait, or bait/lure combo by more than one hook's length.
- d) The use of a dangling/swinging hook is prohibited. No double or treble hooks.

7. Hooks — Artificial Lures

- a) When using an artificial lure with a skirt or trailing material, no more than two single hooks may be attached to the line, leader, or trace. The hooks need not be attached separately. The eyes of the hooks must be no less than an overall hook's length (the overall length of the largest hook used) apart and no more than 12 inches apart. The only exception is that the point of one hook may be passed through the eye of the other hook. The trailing hook may not extend more than a hook's length beyond the skirt of the lure.
- b) A hook may not precede the lure or bait/lure combo by more than one hook's length.
- c) The tournament recognizes products

produced by Quick Rig Corporation under the trade name "Double Trouble Hooks" as acceptable tackle to be used in the tournament.

8. Other Equipment

- a) Fighting chairs may not have any mechanically propelled devices that aid the angler in fighting.
- b) Gimbals must be free swinging. Gimbals that allow anglers to reduce strain or rest while fighting the fish are prohibited.
- c) Harnesses may be attached to the reel or rod, but not to the fighting chair. The harness may be replaced or adjusted by a person other than the angler.
- d) Rod belts or waist gimbals are permitted.
- e) Gaffs used to boat a fish must not exceed 8 feet in overall length. In using a flying or detachable gaff the rope may not exceed 30 feet. The gaff rope is measured from the point where it is secured to the detachable head to the other end. If a fixed head gaff is used, the same limitations shall apply and the gaff rope shall be measured from the same location on the gaff hook. Only a single hook is permitted on any gaff. Harpoon or lance attachments are prohibited. Tail ropes are limited to 30 feet.
- f) Entangling devices, with or without a hook, are prohibited and may not be used for any purpose including baiting, hooking or fighting or landing the fish.
- g) Nets may not be used to obtain a fish.
- h) Outriggers, downriggers, spreader bars and kites are permitted to be used, provided that the actual fishing line is attached to a snap or other release device, either directly or with some other material. The leader or double line may not be connected to the release mechanism either directly or with the use of a connecting device. Spreader bars are also acceptable when used strictly as a teaser.

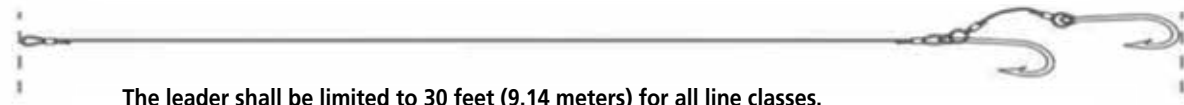
- i) Daisy chains, birds, floats and similar devices may only be used if they do not unfairly hamper or inhibit the normal swimming or fighting ability of the fish, thereby giving the team an unfair advantage in fighting, releasing or boating the fish. Acceptability of this equipment will be determined by the Tournament Organizers on an individual, as needed basis.
- j) A safety line may be attached to the rod provided it does not in any way assist the angler in fighting the fish.



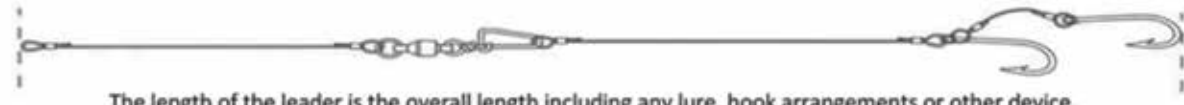
DOUBLE LINES & LEADERS



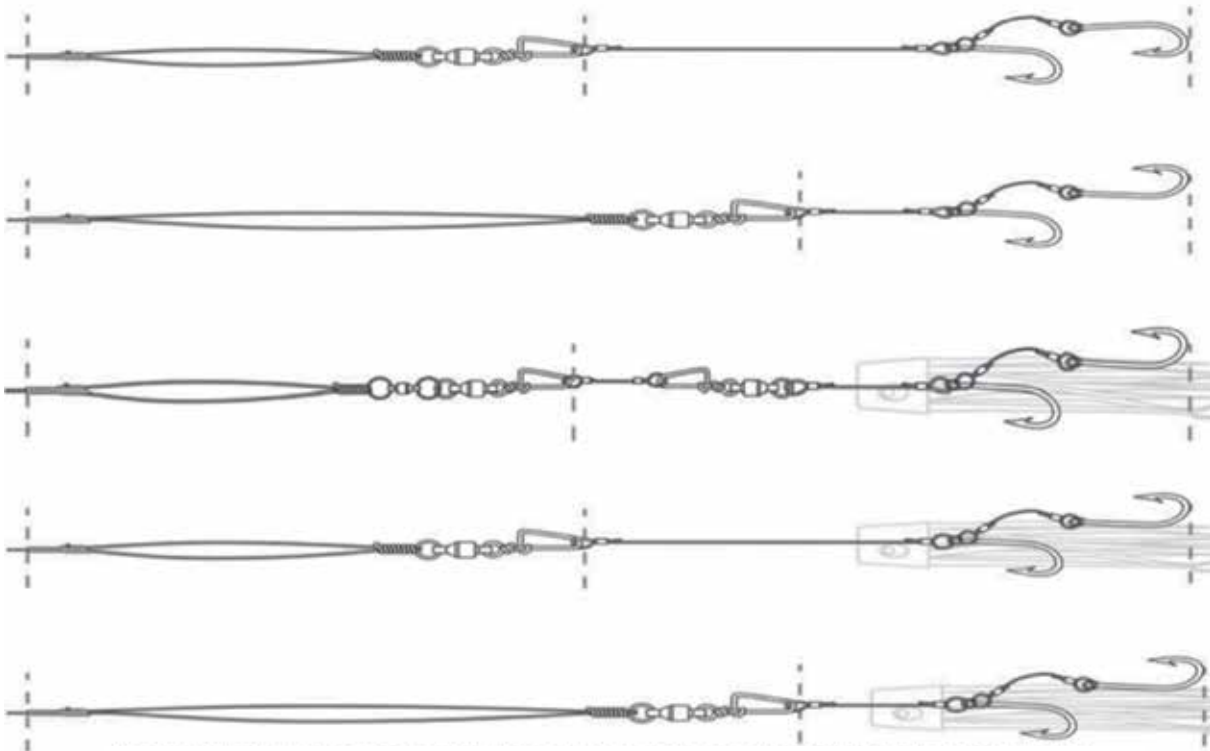
Double lines are measured from the start of the knot, braid, roll or splice making the double line to the farthermost end of the knot splice, snap, swivel or other devices used for securing the trace, leader lure or hook to the double line. A double line must consist of the actual line used to catch the fish. The double line shall be limited to 30ft for all.



The leader shall be limited to 30 feet (9.14 meters) for all line classes.



The length of the leader is the overall length including any lure, hook arrangements or other device.



The combine length of the double line and leader shall not exceed 40 feet (12.19 meters).

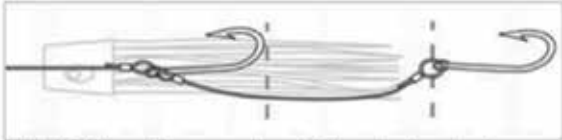
HOOKS & GAFFS



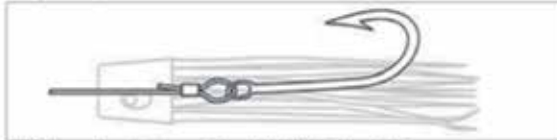
LEGAL if eyes of hooks no more than 18 inches (45.72 cm) apart in baits and no more than 12 inches (30.45 cm) apart in lures. ILLEGAL if eyes further apart than these distances.



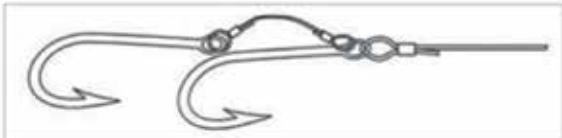
LEGAL as eyes of hooks are no less than a hook's length apart and no more than 12 inches (30.45 cm) apart, and the trailing hook does not extend more than a hook's length beyond the skirt.



NOT LEGAL as the second or trailing hook extends more than the hook's length beyond skirt. See also two hook rigs.



LEGAL as hook is contained within the skirt.



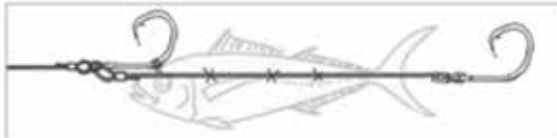
NOT LEGAL in bait or lures as eyes of hooks are less than a hook's length (the length of the largest hook) apart.



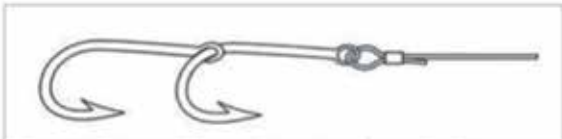
NOT LEGAL as the single hook extends more than its length beyond the skirt.



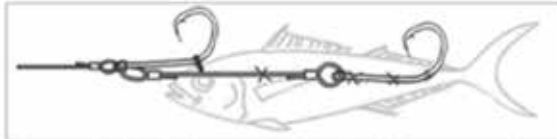
LEGAL as eyes of hooks are no less than a hook's length apart and no more than 18 inches (45.72 cm) in baits and 12 inches (30.45 cm) in lures.



NOT LEGAL as back hook is not firmly imbedded in or securely attached to bait and is a dangling or swinging hook.



LEGAL in baits and lures. The point of one hook is passed through the eye of the other hook.



LEGAL as both hooks are firmly imbedded or securely attached to bait. Would not be legal if eyes of hooks were more than 18 inches (45.72 cm) apart.

GAFFS



LEGAL on boats if effective rope length does not exceed 30 feet (9.15 meters).



LEGAL on boats if overall gaff length does not exceed 8 feet (2.44 meters).

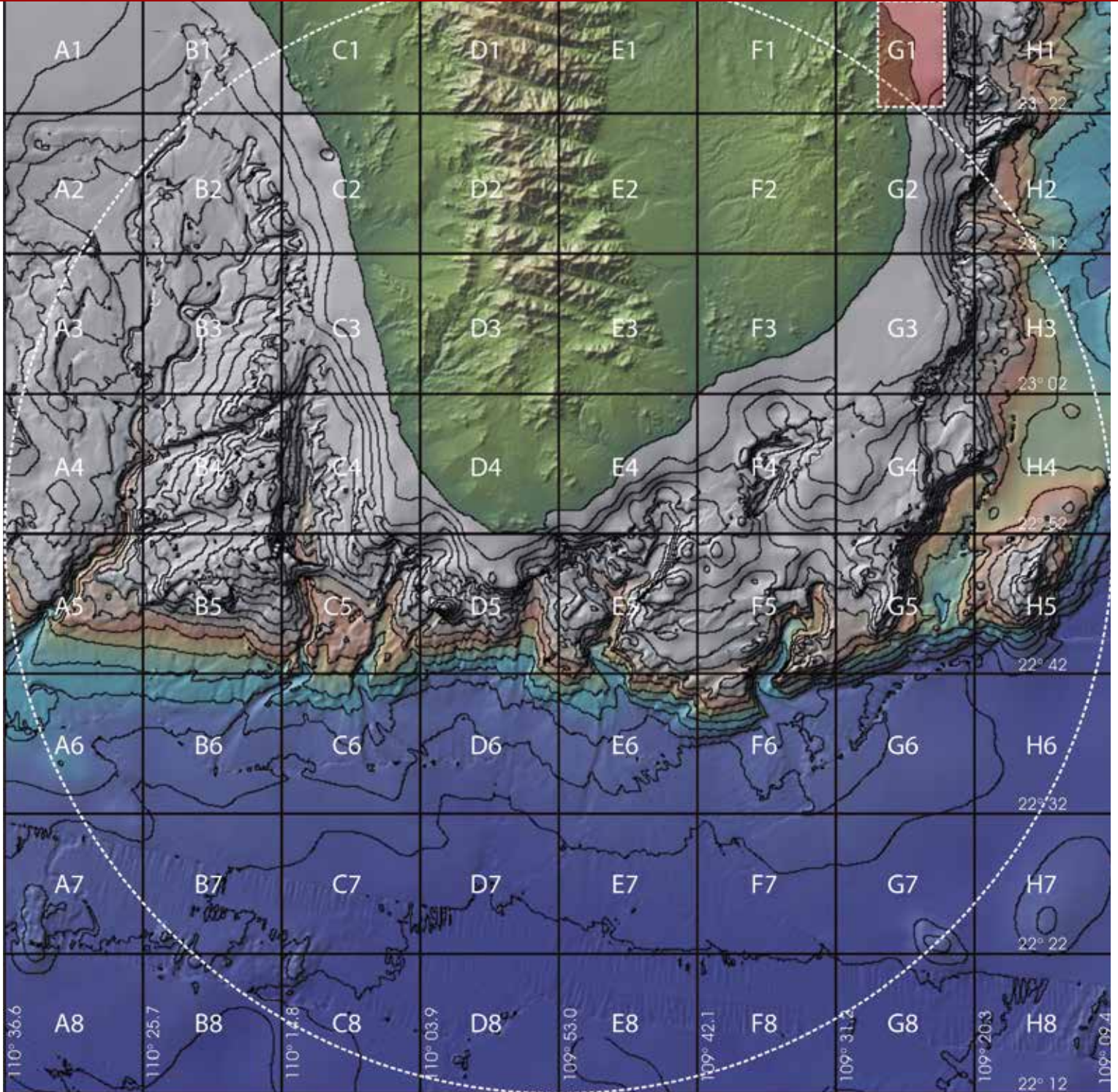


BISBEE'S BLACK & BLUE AND LOS CABOS OFFSHORE GRID MAP
Chart provided by Hilton's Realtime-Navigator (www.realtime-navigator.com)

AREA DE PESCA PARA: LOS CABOS OFFSHORE Y BLACK & BLUE
Carta Marina, cortesía de Hilton's Realtime-Navigator (www.realtime-navigator.com)

40-mile radius surrounding Cabo San Lucas // Center Waypoint: 22° 52.0 N, 109° 53.0 W // Scale: 1 Grid = 10 Nautical Miles

Radio de 40 millas punto de partida // 22° 52.0 N, 109° 53.0 W // Escala: 1 cuadro = 10 Millas Náuticas



Please avoid the CABO PULMO NATIONAL MARINE PARK in the general area of G1,
specifically 23° 22' 30" to 23° 30' 00" N by 109° 28' 03" to 109° 23' 00" W

Prohibido pescar en el Parque Marino de Cabo Pulmo G1,
específicamente 23° 22' 30" A 23° 30' 00" N Por 109° 28' 03" A 109° 23' 00" W